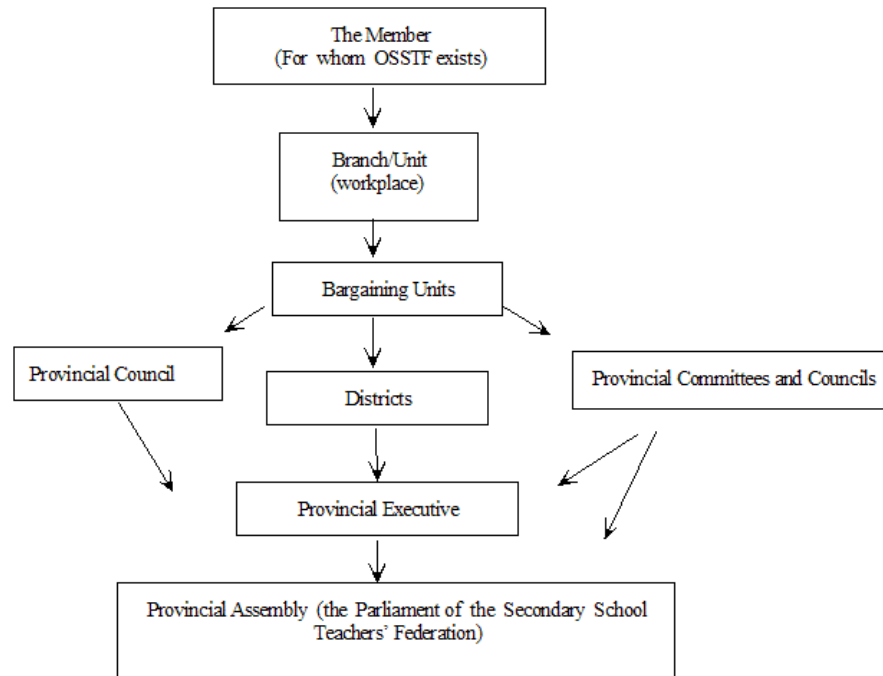


OSSTF Structure



Local Bargaining Units in OSSTF District 9, Greater Essex

Continuing Education Instructors (CEI)

representing over 30 members employed in the following occupational classifications:

- ESL Instructors
- International Language Instructors
- LBS Instructors
- General Interest Instructors

Educational Support Staff (ESS)

representing over 550 members employed in the following occupational classifications:

- Adult Assistant
- Educational Assistant – Cafeteria
- Behaviour Management Systems Worker
- Educational Assistant –JK
- Breakfast Cook
- Educational Assistant – Special Needs Students
- Child & Youth Worker
- Early Childhood Educator
- Early Childhood Educator
- Support Worker Hearing Impaired
- Developmental Service Worker
- Temporary Support Staff

LINC and Employment Services Employees (LESE)

representing approximately 20 members employed in the following occupational classifications:

- Employment Counsellors
- Invest Lab Facilitators
- LINC / ESL Assessors
- Marketing Outreach
- (Language Instruction for Newcomers to Canada)

Occasional Teachers Bargaining Unit (OT) representing over 150 secondary occasional teachers.

Professional Student Services Personnel (PSSP)

representing over 40 members employed in the following occupational classifications:

- Psychoeducational Consultants
- Re-Engagement Counsellors
- Psychological Associates
- Social Workers/Attendance Counsellors
- Psychologists
- Speech Language Pathologists
- Aboriginal Mentorship Program Counsellor
- Communicative Disorder Assistants
- Change Your Future Counsellors

Teachers Bargaining Unit (TBU) representing over 850 secondary school teachers